

# FA-Series IFPD for Business

65" 75" 86" 98"

# FA-Series

## Interactive Flat-Panel Display For Business



AMLogic 311D2 Processor with 8GB RAM and 64GB ROM  
(Expandable to 16GB RAM and 256GB ROM)



Built-in Dual 50MP Cameras



8-microphone array with 3A noise reduction support



Supports Ai Auto Framing, Speaker Tracking,  
Gesture Recognition, and Whiteboard Tracking



ViiTalk Rooms 4K Video Conferencing Software



Whiteboard / Screen Share / Visualizer



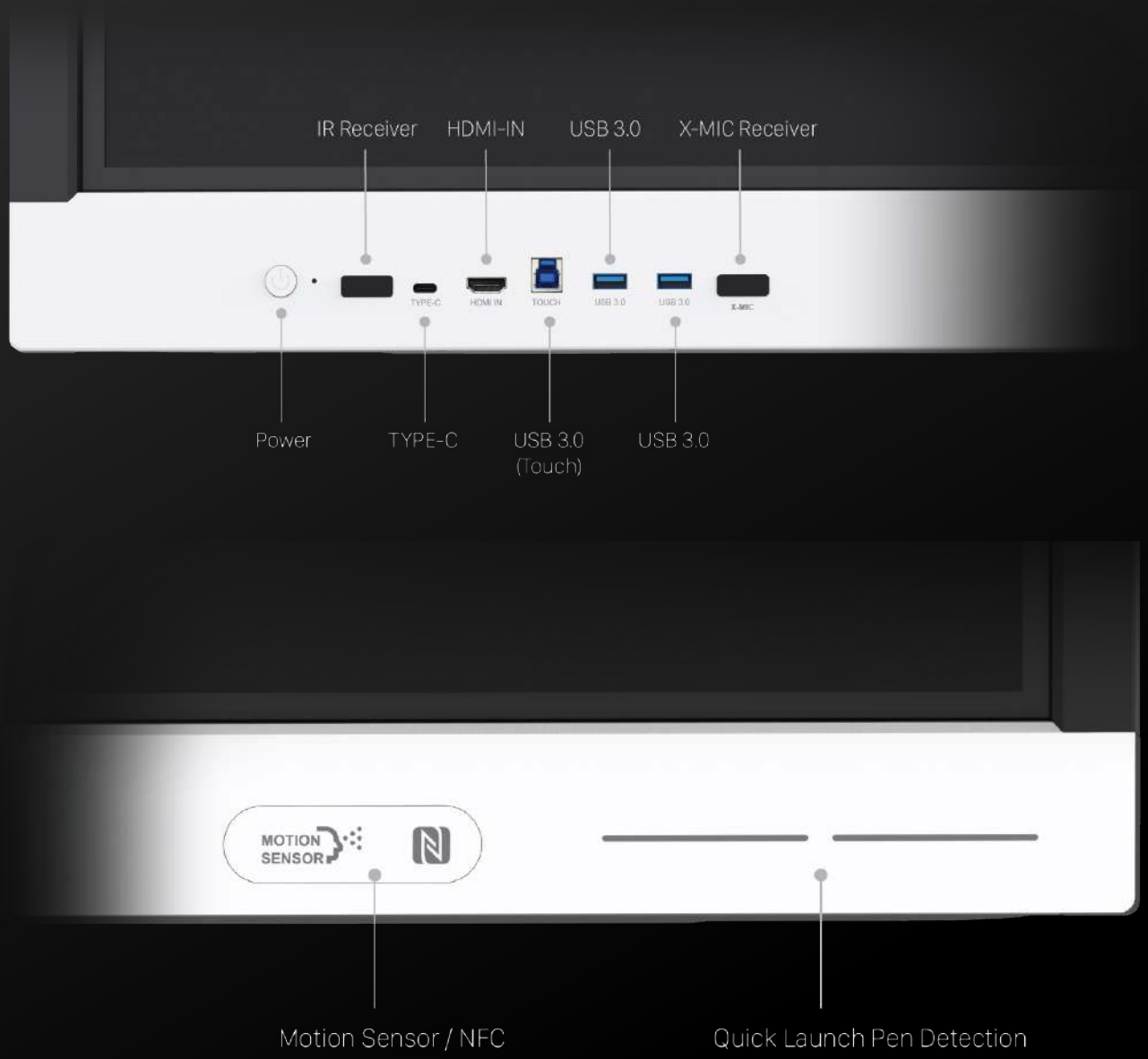
311D2

Android 13

# FA-Series IO Description



Optional OPS Module with 12th Gen Intel CPU



# Versatile Size Options for Every Room

Choose the screen size that fits your space: 65", 75", 86", or 98". With multiple options, it's easy to find the perfect match for any setting or application.



# Experience Every Detail in Stunning 4K Ultra-HD

The FA-Series features an impressive Ultra-HD 4K display with 1.07 billion colors and an 85% NTSC color gamut, delivering vivid imagery with high color accuracy ( $\Delta E \leq 2$ ). This ensures that colors are displayed accurately, enhancing the overall viewing experience.



4K UHD Resolution

$\Delta E \leq 2$

High-Color Accuracy



85% NTSC Color Gamut



Anti-Glare Screen



\*. The panel type can be customized to IPS or VA, both available with an antibacterial glass option for enhanced safety, fitting a wide range of budgets.

# Crystal-Clear Communication Experience

Featuring a built-in **8-microphone array**, the FA-Series delivers superior audio performance. Equipped with powerful DSP algorithms, this system ensures lossless transmission, echo cancellation (AEC), automatic gain control (AGC), and active noise suppression (ANS), AI De-noise, and more. Achieve crystal-clear, full-duplex voice communication with coverage extending up to 10 meters, making every conversation crisp and intelligible.



Embedded  
Audio DSP



AI Noise  
Reduction



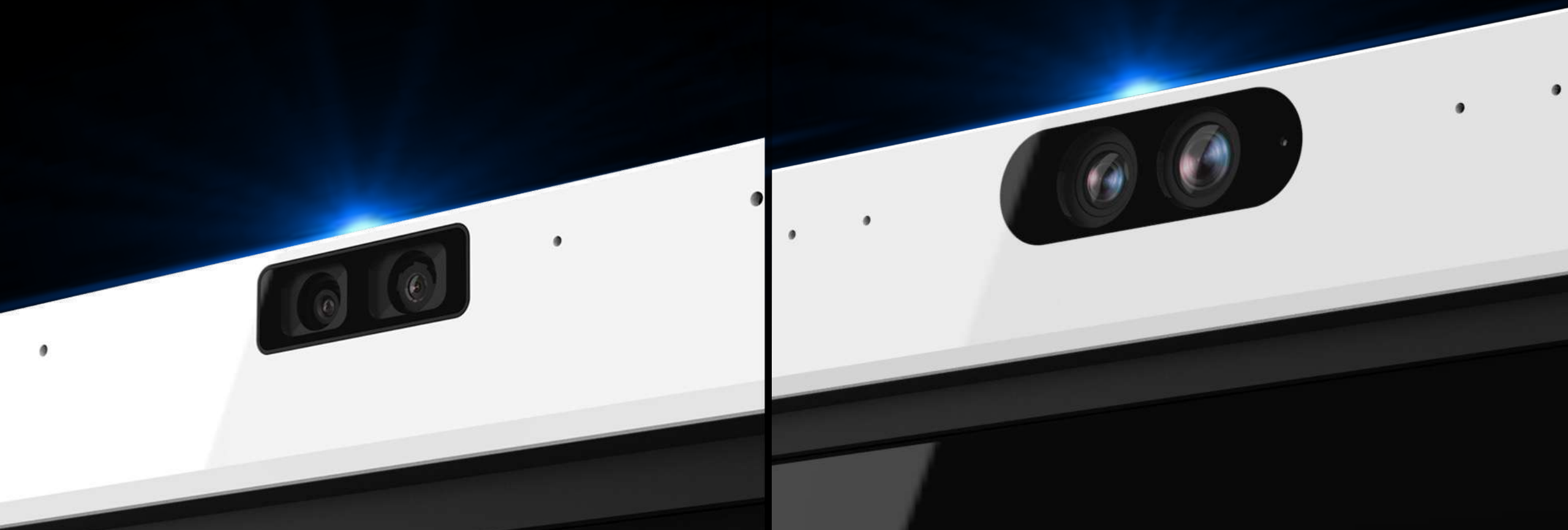
10 Meters  
Sound Pickup



Full Duplex  
Audio



# Dual-Lens Options for Enhanced Visual Experience



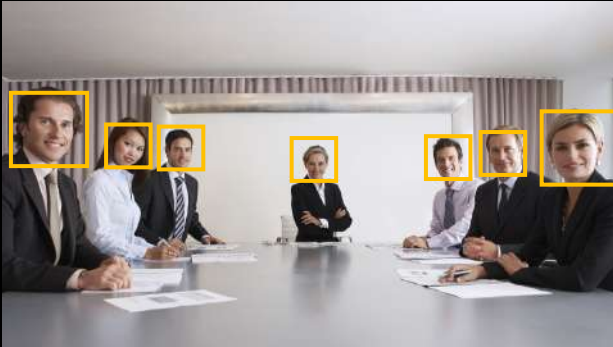
## Dual 48MP Lens Camera

Delivers exceptional image clarity and high resolution.

## Dual 50MP High-Quality Lens Camera

Ideal for versatile use across a variety of applications.

# Revolutionize Your Meetings with Intelligent AI Tracking



## Auto Framing

Auto framing recognizes the number and positions of attendees, automatically adjusting to achieve the best angle based on the number of participants and their locations, providing a close-up view.



## Voice Tracking

Featuring a built-in multi-microphone array, this option includes speaker tracking that frames a real-time close-up of the presenter by continuously locating the sound source. This feature ensures that the presenter is always kept at the center of attention.



## Gesture Control

The intelligent gesture Control feature allows real-time control of the video camera, including auto framing feature remote activation and other customized features.

\*. The AI functions mentioned above are configured through the built-in 'Camera' app.

# Enhance Your Video Conferencing Experience with Advanced AI Features



Present your best self with intelligent facial refinement for a polished, professional look.



Maintain privacy and focus by softly blurring your background, keeping the attention on you.



Protect identities and sensitive visuals with pixelated facial masking for secure collaboration.



# Transform Your Meetings with Professional Dynamic Mode

Experience next-level collaboration with the ViiCam Camera Control app. Effortlessly switch between dynamic modes like Grid and Gallery modes to ensure every participant is seen and heard, creating a truly immersive and professional meeting experience.



Grid Mode



Gallery Mode



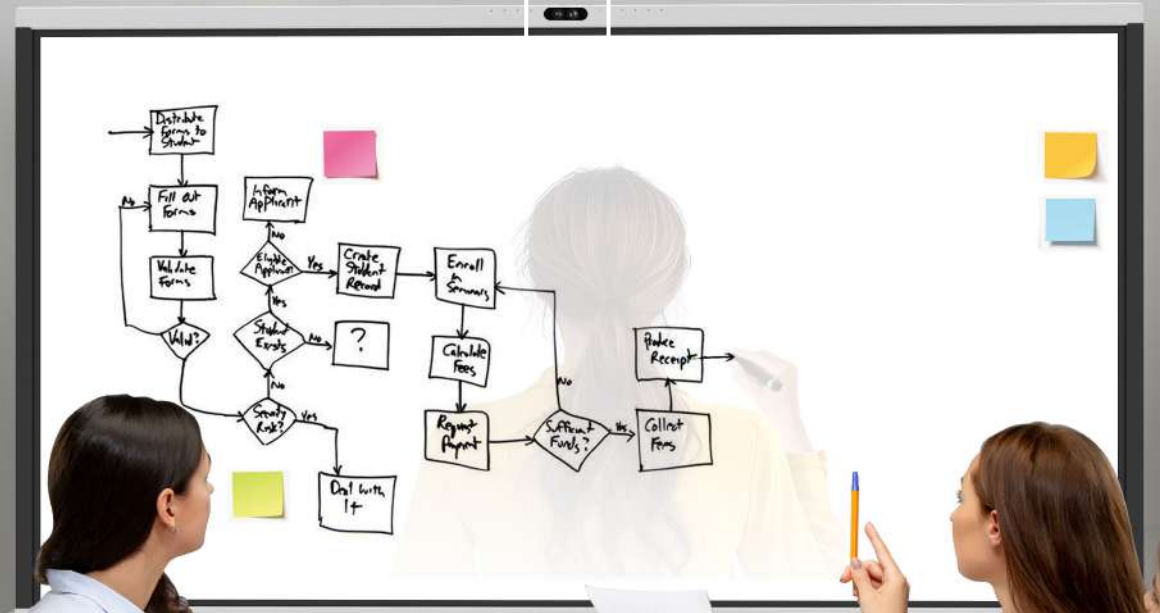
\*. The multi-stream functions mentioned above are configured through the built-in 'Camera' app.

## Detect Whiteboard



## Casting On IFPD Screen

Presenter  
Transparency



# Advanced AI Camera with Auto Shutter for Ultimate Privacy Protection

Shutter Closed



Shutter Opening



Shutter Opened



80°



**Standard View Lens**

Delivers clear and focused of attendees in a standard view.



100°



**Wide-Angle Lens**

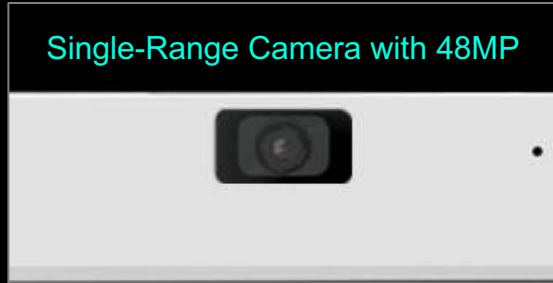
Captures the entire room with ease.



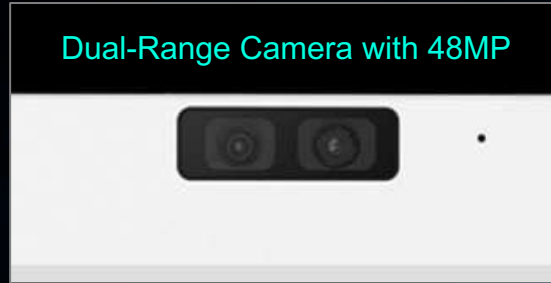
# Advanced Multi-Range Camera Options for Meeting Room with **Any Length**

Experience the versatility of our built-in AI-powered camera options with the IFPD. Available in single, dual, and three-lens configurations with 48MP or 50MP sensors, these systems are tailored to meet all your meeting scenario needs.

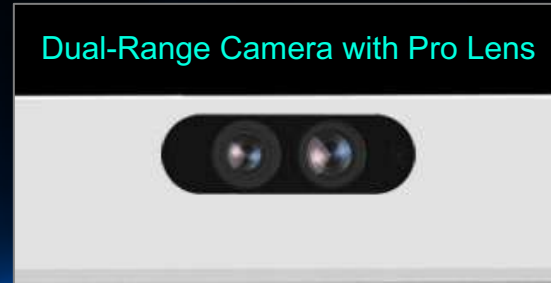
Single-Range Camera with 48MP



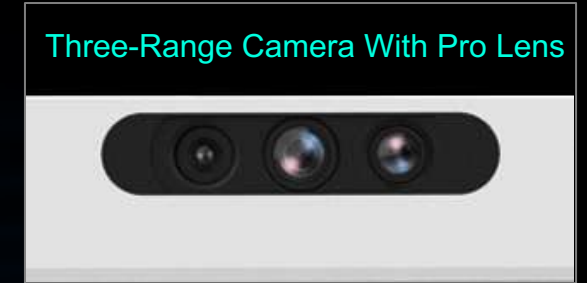
Dual-Range Camera with 48MP



Dual-Range Camera with Pro Lens



Three-Range Camera With Pro Lens



Huddle or Small Conferencing Rooms  
3~4 people



Standard Conferencing Room  
4~7 people



Large Conferencing Room  
12~20+ people



## Seamless Collaboration with Active Stylus Detection

Simply remove the pen from its holder, and the Whiteboard app or annotation mode launches automatically. This convenient feature allows you to quickly initiate team collaboration with ease.

# Eco-Friendly Energy-Saving Design with Human Motion Sensor

Equipped with a highly sensitive motion sensor, it detects human presence and automatically adjusts energy usage for optimal efficiency and sustainability.



Automatic screen wake-up when it detects human presence.



Built-in Motion Sensor and NFC



# Built-in X-MIC receiver for seamless connection with Wireless Microphone

IFPD features a built-in X-MIC receiver with advanced quick wireless pairing technology for seamless connectivity. Tailored for educators, it supports various optional wireless microphones, ensuring crystal-clear audio integration with Interactive Flat Panels.



**New!**

