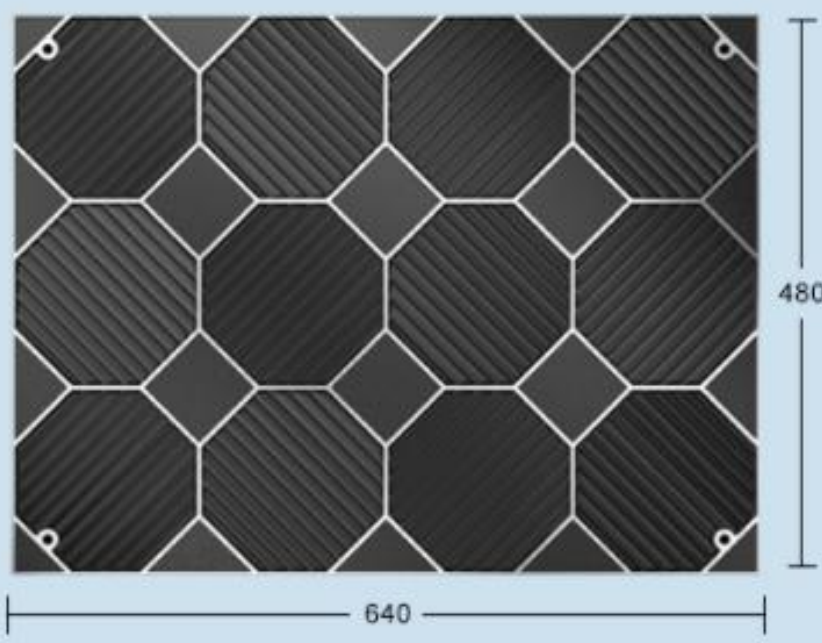


F11 K SERIES PRODUCT  
3RD GENERATION CABINET

Transforming/Thin/Smart/Cost-benefit

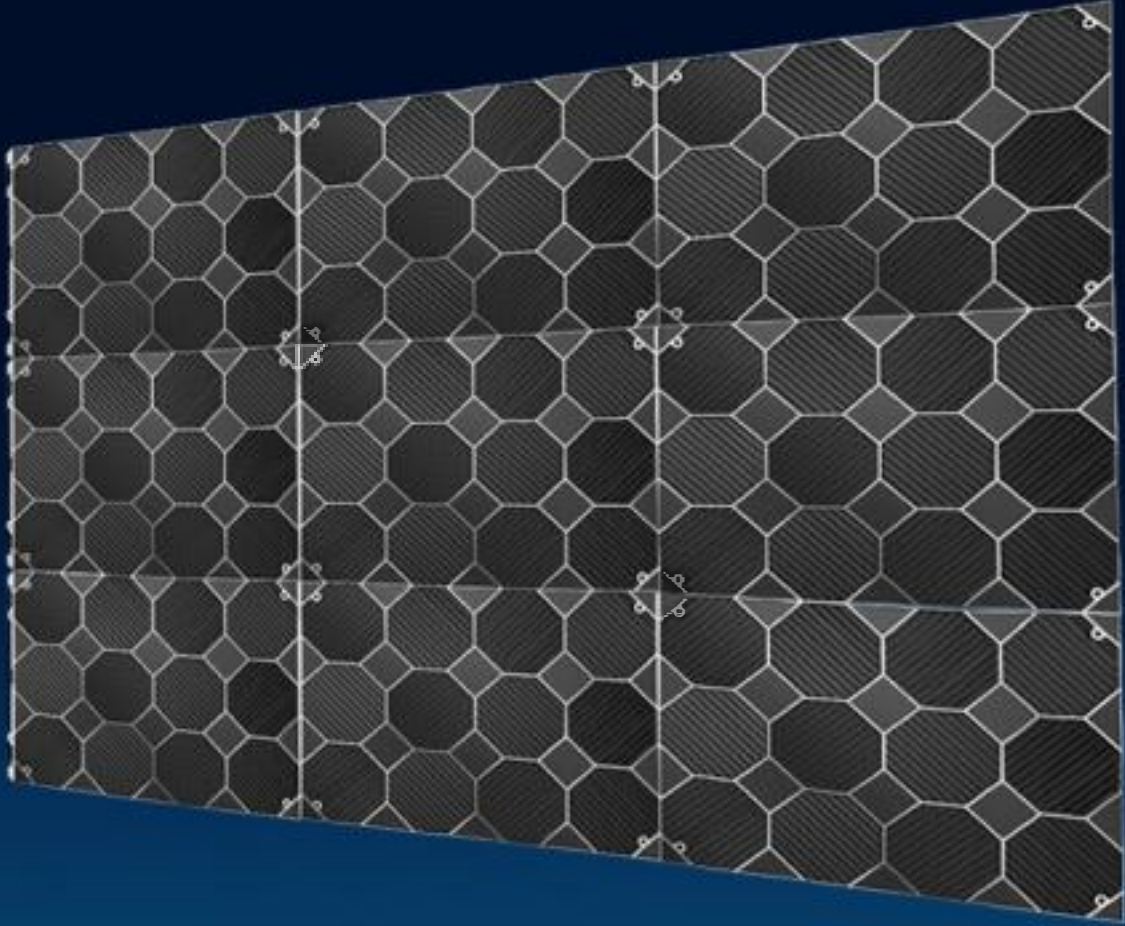


PRODUCT DIMENSION

K-640 Series, is 48mm thin when it is equipped with one integrated interface to combine power and signal output transmission. Its spacy room allows different pxiels to make screen resolution from 1080p to 4K, 8K picrue quality.

INSTALLATION

K-640 Series is a great benefit made for users and offers rich options



DYNAMIC, ENERGY SAVING

Screen detects darkened gradient parts and decideds smartly to enhance contrast and save power.



Ordinary display screen

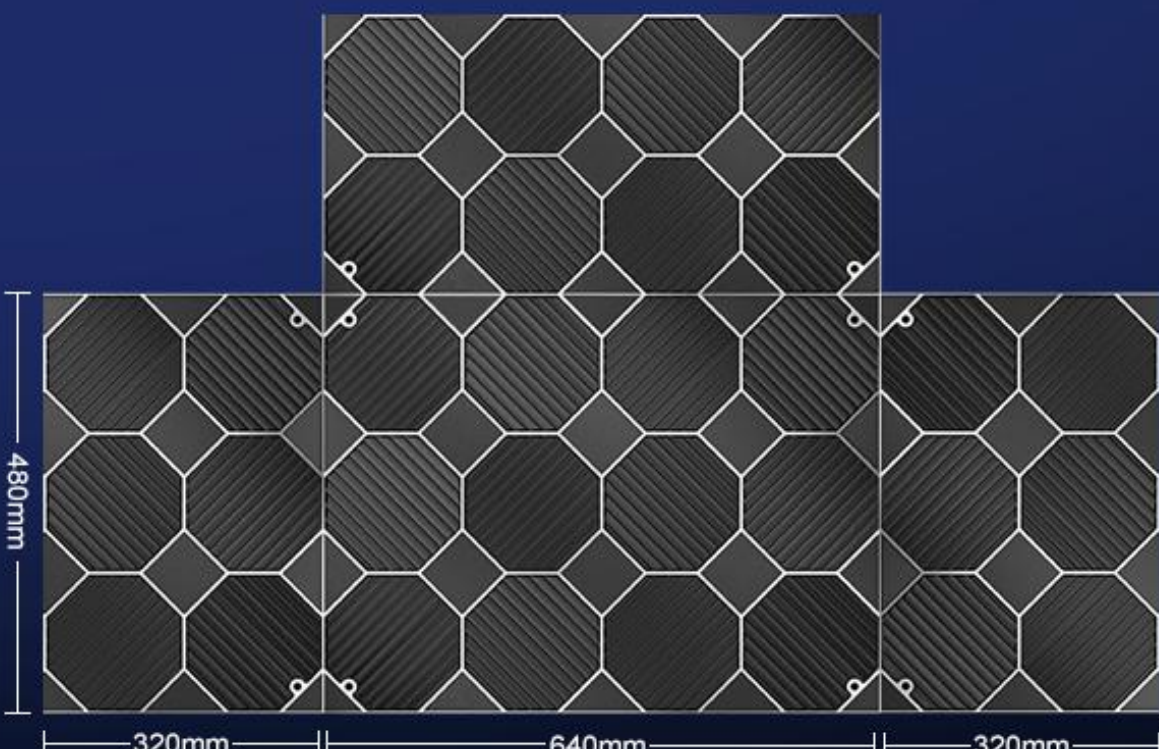
THINKSTV screen

SCREEN EXPRESSION

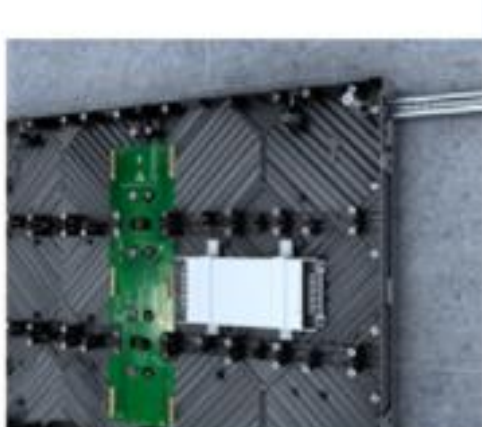
High grayscale levels, high refresh rate, and high contrast ratios at low brightness levels.

MULTI-FUNCTIONAL  
SHAPE-TRANSFORMING

To suit various sizes of the led screen,K Series is changeable to make different shapes and sizes, functioning the right roles.



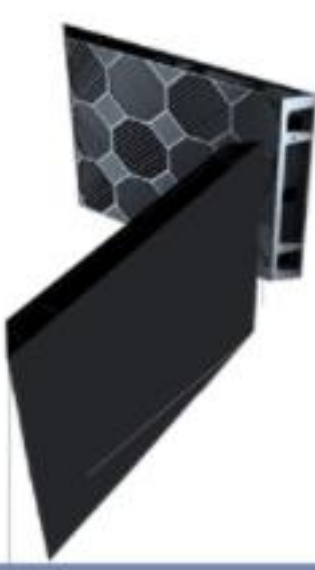
INSTALLATION METHOD



Wall surface mount



Floor stand mount



Right-angle corner stack



H-shaped structure



Suspended mount



CONTROL AND COMMAND CENTER



CONFERENCE ROOM

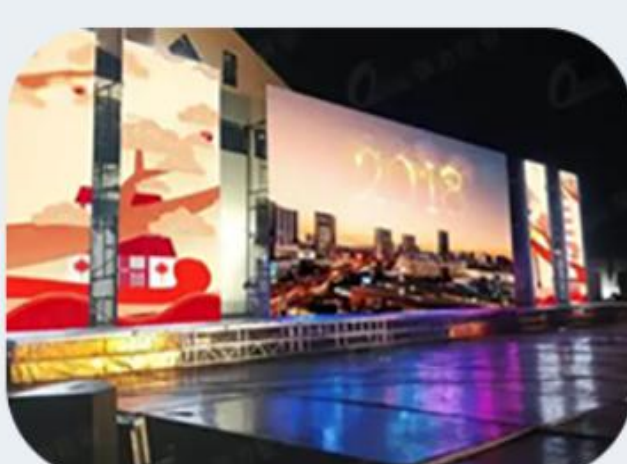
APPLICATION SCENARIO



RADIO STATION



STUDIO



STADIUM HALL

PRODUCT SPECIFICATIONS

Item	K1.25	K1.53	K1.86	K2.5
Pixel pitch	1.25mm	1.53mm	1.86mm	2.5mm
Pixel density	640000	422500	288906	160000
Module size			320x160mm	
LED package	SMD1010	SMD1212	SMD1515	SMD2020
Module resolution(pixels)	256x128	208x104	172x86	128x64
Module arrangement per cabinet			2x3	
Cabinet dimension			640x480x48mm	
Cabinet weight (including module)			7.2kg	
Cabinet resolution (pixels)	512x384	416x312	344x256	256x192
Maintenance			Full front service	
System backup			Support	
White balance brightness			500-800cd/m <sup>2</sup>	
Pixel-level calibration			Support	
Color temperature			6500K (adjustable)	
Refresh rate			3840Hz	
Viewing angle			160°(V/H)	
Brightness uniformity			≥99%	
Grayscale level			16bits	
Contrast ratio			5000:1	
Scanning mode	1/64	1/52	1/43	1/32
Working voltage (input)			110-240V, 50/60Hz	
Max./Avg. Power consumption			500W/m <sup>2</sup> /165-260W/m <sup>2</sup>	
Storage temperature&humidity (RH)			-20°C-50°C&35-75%	
Working temperature&humidity (RH)			-20°C-50°C&35-75%	
IP ratings			IP45	
Screen temperature rise			≤5°C	
Installation			On-wall/recessed/pedestal/suspended/stacked install	
Signal output			HDMI/VGA/DVI/DP	
Certification			RoHS/FCC/CE	